

 **MEDCHAL**



*Live in
Harmony with Nature
at Green Meadows*



About Us

At **Siri Sankalpa Homes & Developers LLP**, we believe that a home is not just a structure — it's a sanctuary of dreams, memories, and growth. With a strong foundation in quality, trust, and innovation, our journey has been one of passion and purpose.

Green Meadows is our flagship residential project, envisioned to offer eco-conscious luxury living in the heart of Medchal. Blending modern architecture with natural harmony, every detail reflects our commitment to excellence, sustainability, and community living.



Mr. U. Naveen Goud, Founder and Chairman of **Siri Sankalpa Homes & Developers LLP**, is a visionary leader dedicated to shaping living spaces that go beyond structures—creating havens of comfort, connection, and enduring value. With a forward-thinking approach rooted in quality, sustainability, and innovation, he aims to redefine modern housing by aligning design excellence with the evolving aspirations of urban communities. Under his leadership, the flagship project **Green Meadows** stands as a reflection of this vision—a thoughtfully crafted residential enclave where lifestyle, well-being, and a true sense of belonging come together seamlessly.

Mr. Sanapati Kesava brings a unique blend of business acumen and empathetic leadership to the core of **Siri Sankalpa**. As a driving force in planning, execution, and customer relations, he ensures that every home is crafted with care, precision, and a personal touch.

“A home should reflect not just luxury, but the values and dreams of the people who live in it.”

“We don’t just build homes—we build communities, lifestyles, and legacies that stand the test of time.”

Our Promise

Together, our founders share a single vision — to build communities that flourish with **trust, transparency, and timeless value**. At **Green Meadows**, we invite you to experience the beginning of something extraordinary.





RERA No: P02200008116



SIRI SANKALPA
HOMES AND DEVELOPERS LLP



LP. No: 06/08/07/MED/R1/U6/HMDA/03052023

High-End Living Surprisingly Affordable

2BHK & 3BHK Luxury Apartments in MEDCHAL

2BHK- 1065 & 1190 SFT. & 3BHK- 1675 & 1800 SFT.



Green Meadows

2 & 3 BHK Luxury Apartments @ Medchal



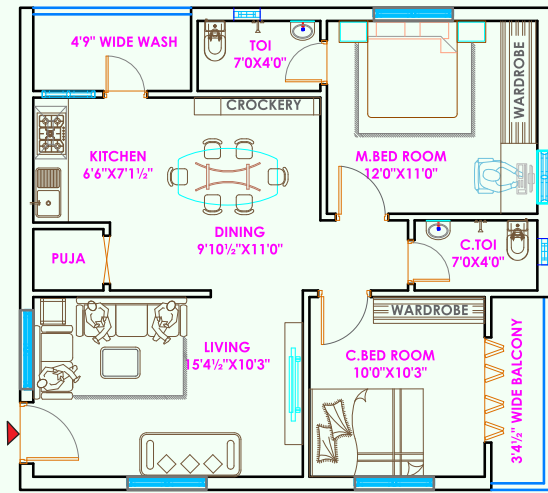
Amenities

- Mini Theatre
- Guest Rooms
- Outdoor Badminton Court
- Indoor Games
- Super Market
- Gym
- Children Play Area

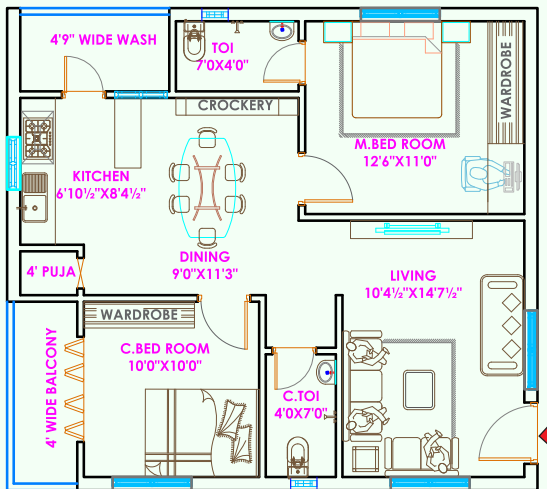
1 Ac 25 Gts

2 BLOCKS

130 FLATS



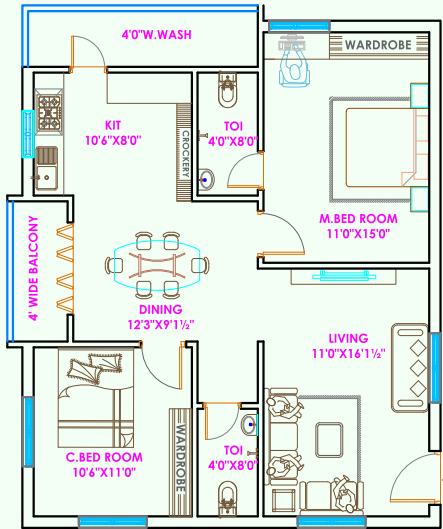
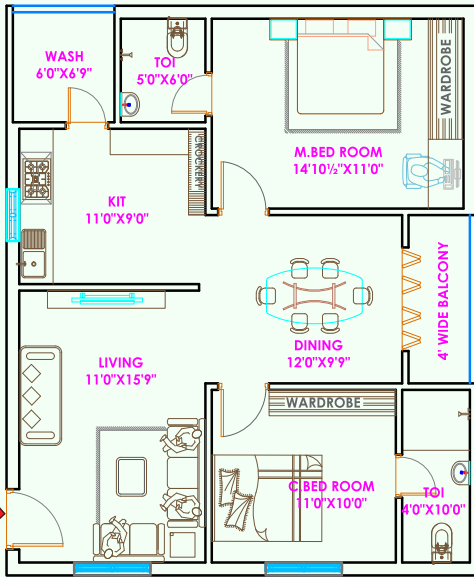
2BHK
EAST FACING
1065 SFT



2BHK
WEST FACING
1065 SFT

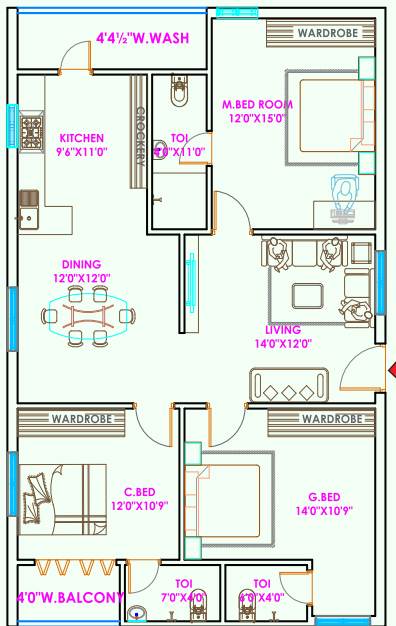


2BHK
EAST FACING
1190 SFT

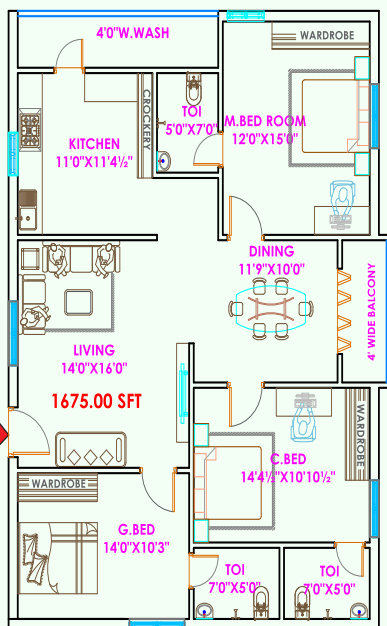


2BHK
WEST FACING
1190 SFT





3BHK
EAST FACING
1675 SFT



3BHK
WEST FACING
1675 SFT





PROJECT INFO: 1 ACRE 25 GUNTAS | 2 BLOCKS | 130 FLATS



SIRI SANKALPA
HOMES AND DEVELOPERS LLP



Green Meadows

2 & 3 BHK Luxury Apartments @ Medchal

UNWIND & RELAX

Explore Our World-Class





INDOOR GAMES



GYM

CLUB HOUSE AMENITIES



GUEST ROOMS



SUPER MARKET

CLUB HOUSE AMENITIES



BANQUET HALL

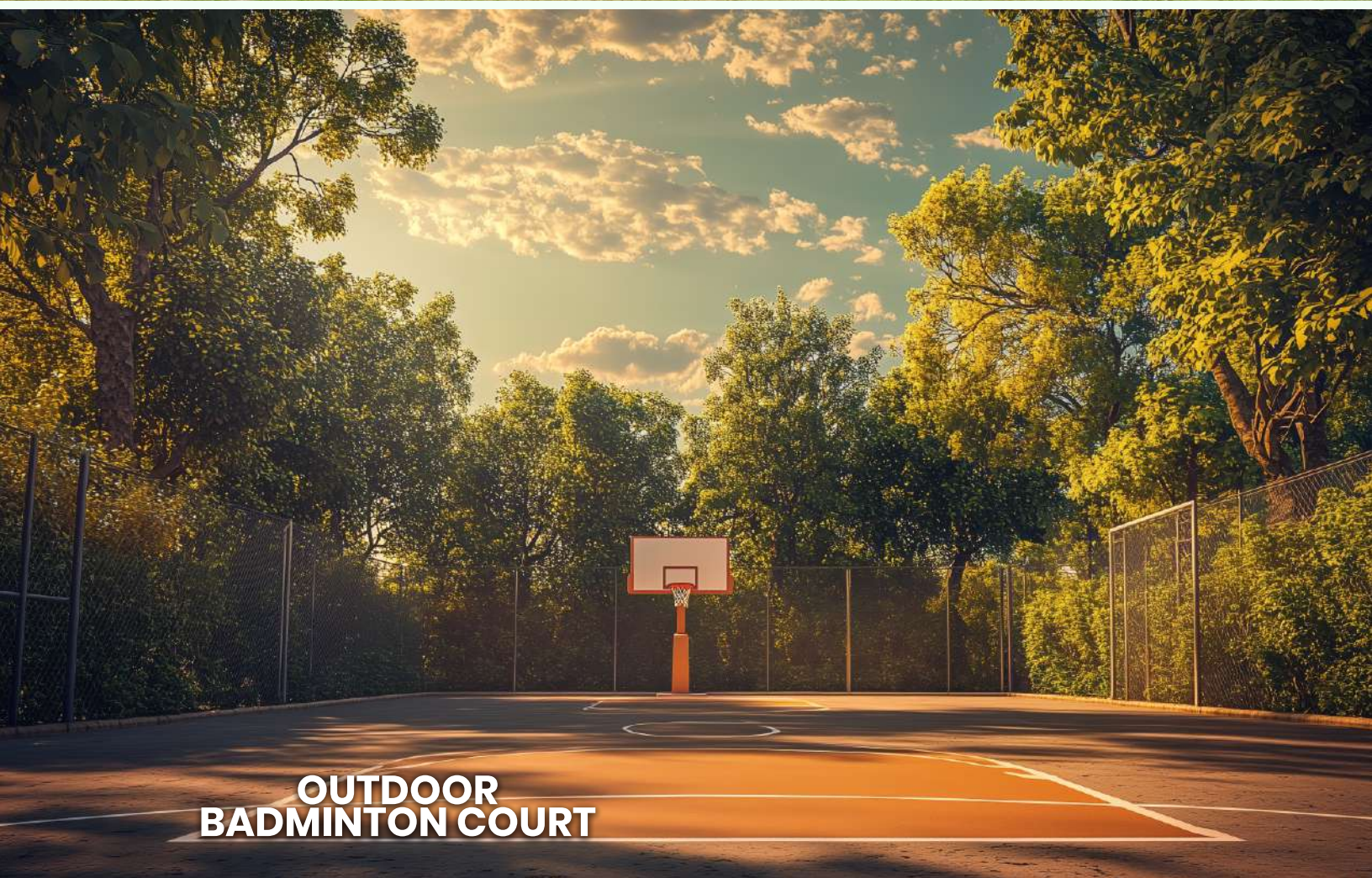


MINI THEATRE

PROJECT AMENITIES



CHILDREN PLAY AREA



**OUTDOOR
BADMINTON COURT**

SPECIFICATIONS

STEEL	: KAMADHENU 550 TMT, DWARAKA TMT/ TIRUMALA TMT
CEMENT	: BHARATHI/CHETTINADU
SAND	: 30% RIVER SAND AND 70% ROBO SAND
WALLS	: OUT SIDE 9 INCH 4.1/2 INCH WALLS
BRICK	: RED BRICK
DOOR FRAMES	: MAIN DOOR FRAMES WITH TWO SIDES TEAK [3.6*6.9FT] OTHERS INDIAN TEAK WITH SINGLE SIDE COLOR [3* 6.9FT]
WINDOW	: UPVC WITH GRILL
DOOR	: MAIN DOOR INDIAN TEAK AND OTHERS ARE FLUSH DOORS, PVC FRAMES AND DOORS BATHROOMS
CP AND SANITARY	: PARRYWARE OR EQUAL BRAND
PLASTERING	: 2 COATS
PLUMBING	: CPVCS, SWR PIPES OF GOOD BRAND
ELECTRICAL	: M.S WALL BOX
ELECTRICAL PIPES	: SUDHAKAR / BIRLA
SWITCHES	: ANCHOR OR EQUAL BRAND SWITCHES
WIRING	: FINE CAB OR AS PER YOUR REQUIREMENT IN THIS PRICE RANGE
BATHROOM TILES	: DOOR LEVEL 7FT OF 18 X 12SIZE
KITCHEN PLAT FORM:	BLACK PEARL GRANITE WITH 3FT HEIGHT TILES OF GOOD BRAND OF 18 X 12 SIZE
PAINTING	: INTERNAL-BIRLA WALL PUTTI WITH BIRAL EMULSION PAINTS, EXTERNAL- TEXTURE WITH APEX ULTIMA PAINTS
FLOORING ROOMS	: 600*600 DOUBLE CHARGED OF VITRIFIED TILES
LIFT	: 5 LIFTS OF REPUTED BRAND
GENERATOR	: ONE GENERATOR OF REPUTED BRAND TO SERVE COMMON AREA.



SIRI SANKALPA

HOMES AND DEVELOPERS LLP



Green Meadows

2 & 3 BHK Luxury Apartments @ Medchal



Project Approved By:

TS RERA
TELANGANA STATE REAL ESTATE REGULATORY AUTHORITY

RERA No: P02200008116

hmda
Growing Global

LP. No: 06/08/07/MED/R1/U6/HMDA/03052023

Corporate Office :

SIRI SANKALPA GREEN MEADOWS

Ravalkol Village, Medchal Mandal, Medchal-Malkajgiri Dist - 501401.